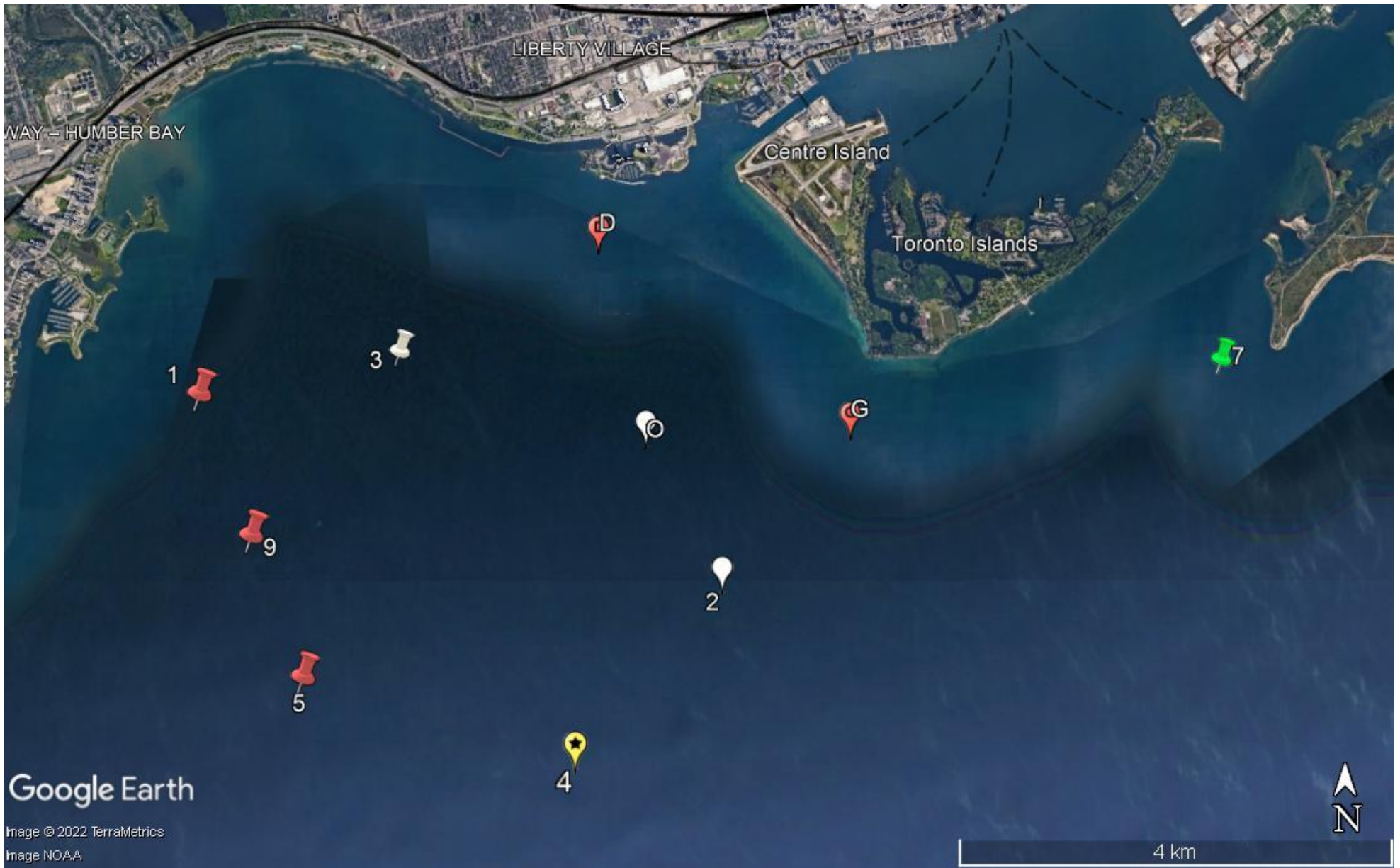


AHMEN RACING 2022

RACE MARK COORDINATES

Mark	Description	Latitude	Longitude
D	Dufferin 'T' Toronto West Entrance Fairway [No. 513]	43° 37.24' N	79° 25.22' W
G	Gibraltar Point – 'TE18' red spar [No. 511]	43° 36.32' N	79° 23.50' W
0	NYC Racing Mark 0 [PRIV] – white spar	43° 36.28' N	79° 24.90' W
1	MCC Racing Mark 1 [PRIV] – yellow spar with FOGH logo	43° 36.46' N	79° 27.98' W
2	NYC Racing Mark 2 [PRIV] – white spar	43° 35.56' N	79° 24.38' W
3	TS&CC Racing Mark 3 [PRIV] – white spar	43° 36.68' N	79° 26.61' W
4	Dropped inflatable with pre-established fixed position	43° 34.68' N	79° 25.38' W
5	MCC Racing Mark 5 [PRIV] – yellow spar with FOGH logo	43° 35.06' N	79° 27.28' W
6	Inflatable position announced by race committee		
7	Toronto Outer Harbour Approach – 'T1' green spar [No. 508]	43° 36.64' N	79° 21.01' W
9	MCC Racing Mark 9 [PRIV] – yellow spar with FOGH logo	43° 35.76' N	79° 27.63' W

This edition: March 15, 2022



The above is from Google Earth and is to scale.

Marks	Nautical miles	Degrees true
3 to 1	1.02	257
3 to 9	1.18	219
3 to 5	1.69	196
3 to 0	1.31	108
3 to D	1.16	61
D to G	1.55	126
3 to G	2.29	99
G to 7	1.83	80
5 to 0	2.11	55
5 to 7	4.81	71
5 to G	3.01	65
5 to D	2.64	34
1 to 9	0.73	160
9 to 5	0.75	159